

# Sulphur Springs Elementary

School Website

Principal: Dr. David Little

423-753-1140

@SSSGamecocks

Facebook: Sulphur Springs School and Community News 1518 Gray Sulphur Springs Rd, Jonesborough, TN 37659



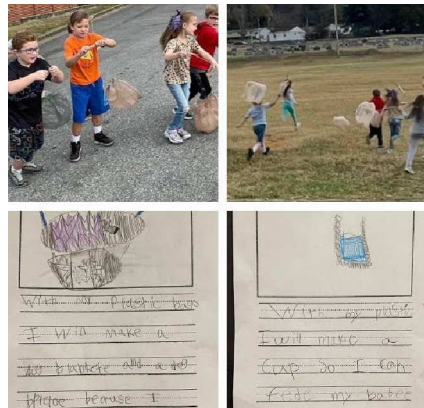
## STEM Culture

Receiving STEM Designation has enhanced our school culture and generated excitement for the students, faculty and staff, and the surrounding community. Students enjoy the opportunities to actively participate in their learning and use their creativity in planning and designing products. The community of stakeholders and community partners are very interested in learning more about what is happening for students at Sulphur Springs. The transformation has increased the awareness for opportunities outside the classroom and for future careers. STEM Designation has changed my mindset for teaching-cross curricular projects are more simple than they sound. We have a learning environment for ALL learners to be able to be successful especially those who struggle in a traditional setting. It's been an amazing transformation to see! Sarah Asbury, 5th grade math and science

-Dr. David Little

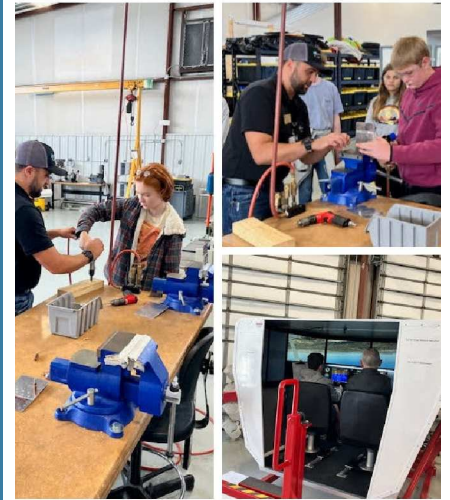
## PBL Spotlight

"Our planet PBL students went above and beyond with their presentations, their models of planets, rovers, space stations, and meteors. They wanted to make them better so they were constantly working to perfect them and they were very motivated. The knowledge they gained from the project was amazing! Not only did they learn through inquiry and research, but they shared their knowledge with each other." Sarah Asbury, 5th grade math and science teacher "They enjoyed their PBL's and didn't realize they were learning authentically." Regina Hensley, 3rd grade math and science teacher



"Because of the change in mindset within our school it has become second nature for us to implement PBL/STEM into our classrooms. We plan together and meet regularly to get ideas and stay focused on student learning and engaging ideas." "It is how our teachers teach - it is a natural thought process."

-Jessica Miller, Interventionist



## Partnerships Matter

"The community and industry stakeholders provide support in planning PBL units. Partners provide hands-on experiences for students in the classroom and through field trips. Many of the partners participate in the SSES family and community events by setting up stations to interact with students, families, and other community members. "We are constantly reaching out to bring in community members so that students can make connections in their learning and be exposed to careers in a field they care about." Sarah Asbury, 5th grade math and science "I didn't know that I could go to school and get a certification to work as a mechanic!" 8th grade student after a visit to a technical school

-Dr. David Little



[tsin.org](http://tsin.org)  
[tinstemdesignation.org](http://tinstemdesignation.org)